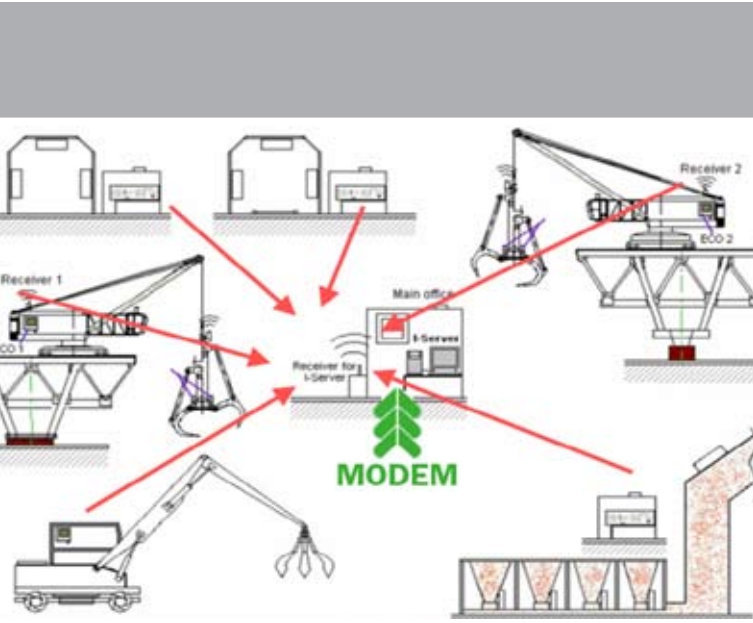




Cetto I-Server

The central Radioactivity control server

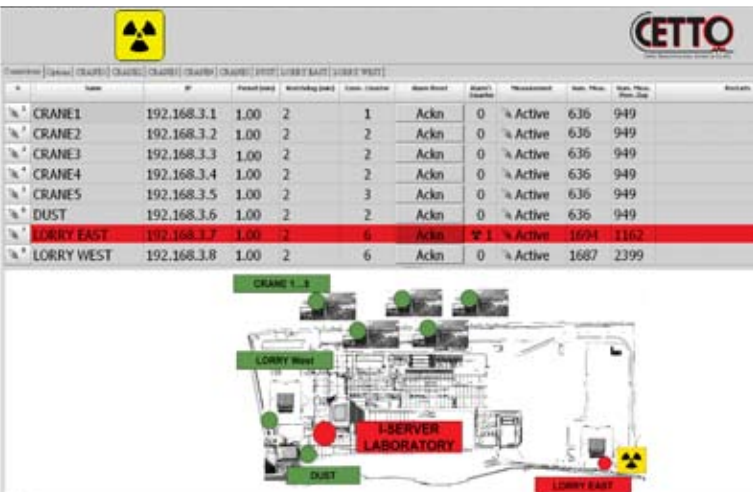


Radiation Detection for the Steel- and Recycling Industry

In many companies different systems are often used for radioactivity measurement (e.g., lorry measuring systems at gate entrances, grab measuring systems for loading and unloading, ...). The central monitoring system "I-Server" offers the possibility to serve and maintain all used measuring systems clear and comfortable from one central point.

The different measuring arrangements can be used efficiently. Unnecessary ways to the measuring systems can be avoided.

The I-Server offered by CETTO represents the optimum solution for every company. Even measuring systems from other manufacturers can be integrated into the I-Server.



[Figure: I-Server screen display.]

Particularities of Cetto I-Server

- > Integration of all radioactivity measuring systems (e.g.: systems for lorries, wagons, grabs, magnets, dust, steel samples, ...)
- > Clearly arranged user interface
- > Control of all measuring systems from the first sight
- > Everyday, weekly or monthly reports and statistics
- > Central data storage and logging
- > Central dial-up point for servicing and service work
- > Time synchronization
- > For the single measuring systems:
 - Status announcement
 - Remote access
 - Configuration
 - Transfer of software updates

look at it all

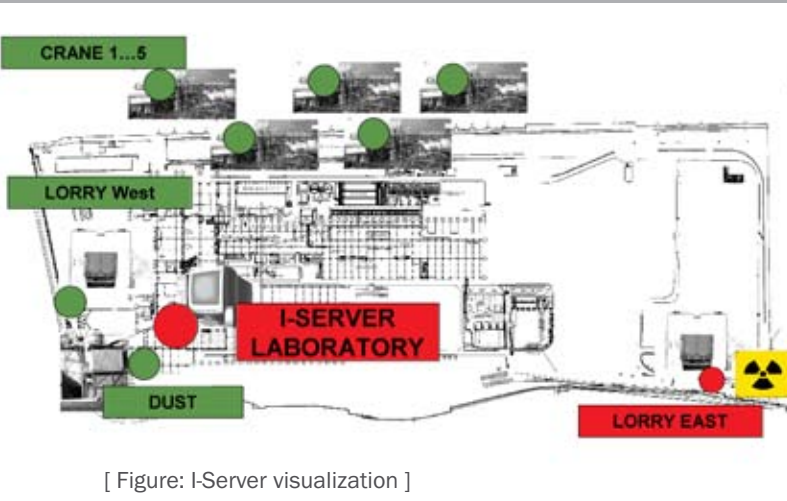


Cetto I-Server

The central Radioactivity control server

OPTIONS

- > In the alarm case notification via E-mail or SMS
- > externally acoustic alarm
- > Camera supervision
- > Input/Output unit
- > Connection between I-Server and measuring systems about network cable, fiberglass cable or W-LAN



[Figure: I-Server visualization]

SPECIFICATIONS

General Information

Dry contact for notification of alarms and system failures

Integrated Watchdog function

Server

Panel PC Pentium IV or higher

TFT Monitor

2 GB RAM

Hard drives: **2 x 160 GB**

Printer

Network interface card

Redundant power supply

I/O Unit

Serial interface

Supply voltage: **230 VAC**

Internal supply: **24 DC**

Inputs: **4**

Outputs / Relays: **11**

Outputs are free configurable by the software and can be linked to different system events (for instance alarms, system errors...)

W-LAN Module Standard

Access point for 2.4 GHz operation with 54/108 Mbps with IEEE 802.11b/g

Temperature range: **0 - 50°C**

W-LAN Module Industrial

Rugged dualband access point for 2.4 or 5 GHz frequencies with 54/108 Mbps with IEEE 802.11a/b/g/h

Robust metal housing with IP50 dust protection, ready for wall, top-hat rail, or pole mounting; for deployment in warehouses, production facilities and similar environments

Temperature range: **0 - 50°C**

W-LAN Module Outdoor

Outdoor dualband access point for 2.4- and 5-GHz operation

Two integrated 54/108 Mbps wireless modules for simultaneous operations with IEEE 802.11a/b/g/h

IP66 housing with heating and cooling for temperature range **-30 - +70°C**

FOR FURTHER INFORMATION PLEASE CONTACT US